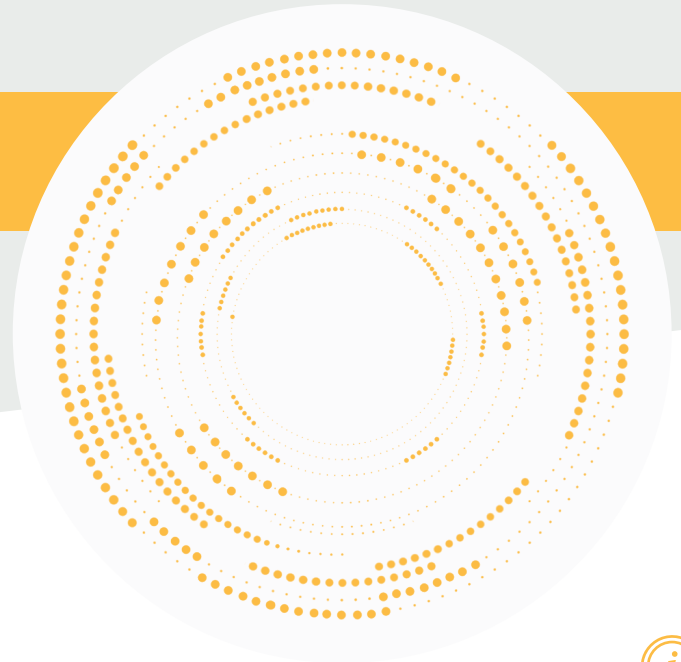


# AS

## Dual Shear Beam Load Cell



### Product Description



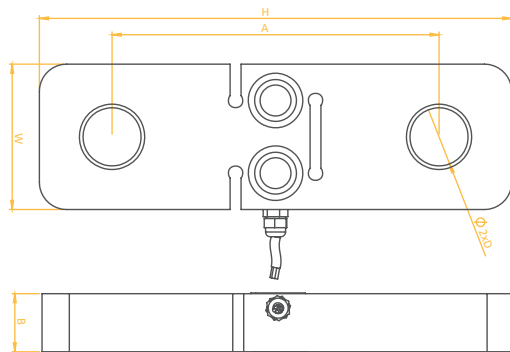
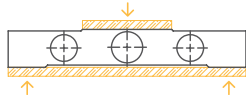
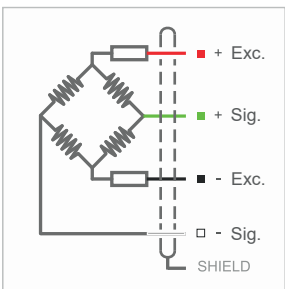
The AS dual-shear beam load cell, available in 1 and 2-ton capacity options, is designed to meet your high-precision measurement needs. Its durable nickel-plated alloy or stainless steel body ensures long-lasting and reliable performance, even in demanding industrial conditions.

### Technical Specifications



Capacity	1, 2 Ton	Insulation Resistance	≤ 5000 MΩ (100 VDC)
Accuracy Class	C1	Compensated Operating Temperature	-10 ~ +40 °C
Min. Load	0 kg	Operating Temperature	-30 ~ +70 °C
Max. Division Count (nLC)	2000	Recommended Excitation Voltage	10 VDC
Min. Measuring Range (Y=Emax / Vmin)	4000	Max. Excitation Voltage (Umax)	15 VDC
Total Error	±0.03 %FS	Overload Capacity	150 % FS
Output Gain (FS)	2.00 ± 0.02mV/V	Breaking Load	300 % FS
Zero Balance	± 1 %FS	Protection Class	IP 66
Input Resistance	750 Ω ± 20 Ω	Material	Alloy / Stainless Steel
Output Resistance	702 Ω ± 3 Ω	Cable	4x0.14mm <sup>2</sup> - 3,5 M.

### Technical Dimensions and Drawings



### Application Areas

- On-Vehicle Weighing Applications
- Brake Testing Machines
- Vehicle Testing Machines

Capacity	H	W	D	A	B	Cable
5 Ton	260	80	32	180	32	6 m
10 Ton	280	90	40	190	36	8 m
20 Ton	300	100	48	200	40	12 m
30 Ton	320	115	60	200	55	12 m
50 Ton	480	150	82		50	15 m



LPTSENS  
Load Cell and Industrial Weighing Systems