

DLSBC | Dual Shear Beam Load Cell



Product Description



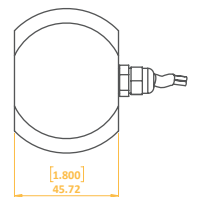
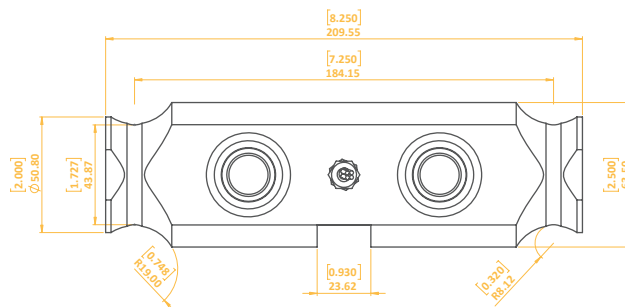
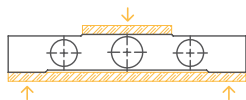
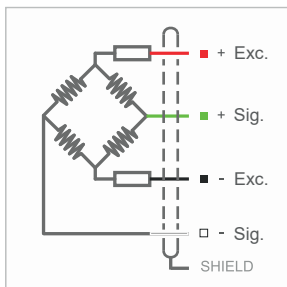
The DLSBC dual-shear beam load cell, available in 50 and 75 Klb capacity options, is designed to meet your high-precision measurement needs. Its durable nickel-plated alloy or stainless steel body ensures long-lasting and reliable performance, even in demanding industrial conditions

Technical Specifications



Capacity	50, 75 Klb	Insulation Resistance	≤ 5000 MΩ (100 VDC)
Accuracy Class	C3	Compensated Operating Temperature	-10 ~ +40 °C
Min. Load	0 kg	Operating Temperature	-30 ~ +70 °C
Max. Division Count (nLC)	3000	Recommended Excitation Voltage	10 VDC
Min. Measuring Range (Y=Emax / Vmin)	10000	Max. Excitation Voltage (Umax)	15 VDC
Total Error	±0.02 %FS	Overload Capacity	150 % FS
Output Gain (FS)	2.00 ± 0.005mV/V	Breaking Load	300 % FS
Zero Balance	± 1 %FS	Protection Class	IP 68
Input Resistance	750 Ω ± 30 Ω	Material	Alloy / Stainless Steel
Output Resistance	702 Ω ± 5 Ω	Cable	4x022mm ² - 15 M.

Technical Dimensions and Drawings



Application Areas

Truck and Trailer Scales



LPTSENS
Load Cell and Industrial Weighing Systems