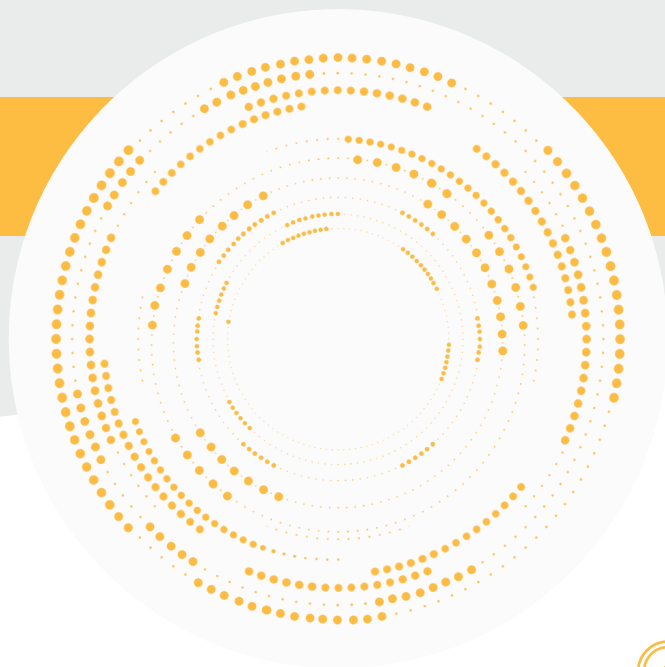


SL106 | Single Point Load Cell



Product Description



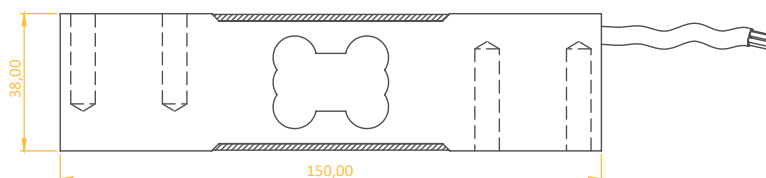
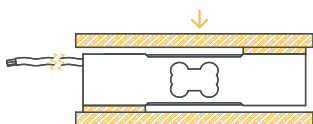
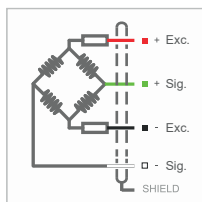
The SL106 Single Point Load Cell is manufactured from a special alloy aluminum material. Its anodized coating provides extra protection against harsh environmental conditions. This load cell, which can be used independently in platform scale applications, stands out with its high precision and wide capacity range.

Technical Specifications



Capacity	50, 100, 150, 200, 250 kg	Insulation Resistance	≤ 5000 MΩ (100 VDC)
Accuracy Class	C3	Compensated Operating Temperature	-10 ~ +40 °C
Min. Load	0 kg	Operating Temperature	-30 ~ +70 °C
Max. Division Count (nLC)	3000	Recommended Excitation Voltage	10 VDC
Min. Measuring Range (Y=E _{max} / V _{min})	10000	Max. Excitation Voltage (U _{max})	15 VDC
Total Error	±0.02 %FS	Overload Capacity	120 %FS
Output Gain (FS)	2.00 ± 0.01mV/V	Breaking Load	200 %FS
Zero Balance	±1 %FS	Protection Class	IP 65
Input Resistance	400 Ω ± 20 Ω	Material	Aluminum
Output Resistance	352 Ω ± 3 Ω	Cable	4x0.14 mm ² – 3.5 Meters

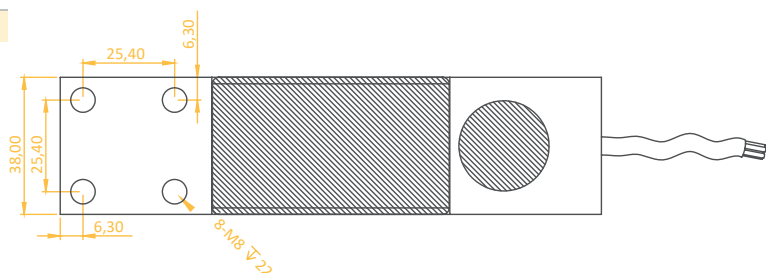
Technical Dimensions and Drawings



PLATFORM DIMENSION

50, 250 KG

400 X 400 MM



Application Areas

Platform scales

Checkweighing systems

Filling and packaging machines

Counting scales



LPTSENS
Load Cell and Industrial Weighing Systems