

# STKA | S Type Load Cell



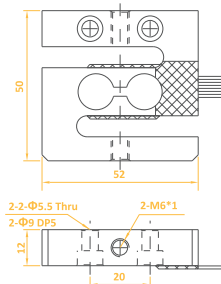
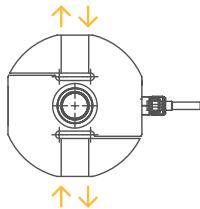
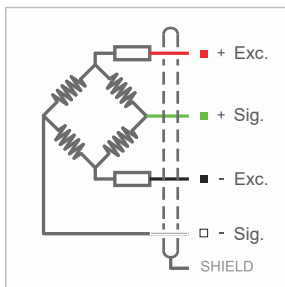
## Product Description

The STKA S-Type Load Cell is designed to meet your high-precision measurement needs with capacity options ranging from 2 kilograms to 500 kilograms. Its durable anodized aluminum body adapts to harsh industrial conditions, while its hermetic sealing ensures long-lasting and reliable usage. The STKA operates on the tension and compression principle.

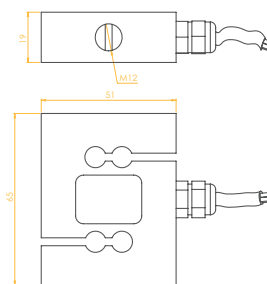
## Technical Specifications

Capacity	2, 5, 10, 50, 100, 200, 500 Kg	Insulation Resistance	≤ 5000 MΩ (100 VDC)
Accuracy Class	C2	Compensated Operating Temperature	-10 ~ +40 °C
Min. Load	0 kg	Operating Temperature	-30 ~ +70 °C
Max. Division Count (nLC)	3000	Recommended Excitation Voltage	10 VDC
Min. Measuring Range (Y=Emax / Vmin)	12000	Max. Excitation Voltage (Umax)	15 VDC
Total Error	±0.022 %FS	Overload Capacity	150 % FS
Output Gain (FS)	2.00 ± 0.005mV / V	Breaking Load	300 % FS
Zero Balance	±1 %FS	Protection Class	IP 66
Input Resistance	380 Ω ± 20 Ω	Material	Aluminium
Output Resistance	350 Ω ± 3 Ω	Cable	4x0.14mm <sup>2</sup>

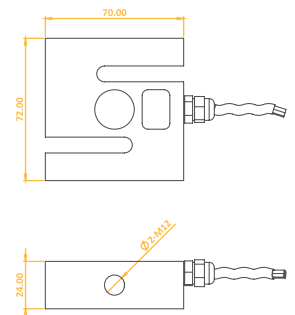
## Technical Dimensions and Drawings



2 - 5 - 10 Kg



10-50-100-200 Kg



500 Kg

## Application Areas

Packaging and Filling Machines  
Mechanical Scale Conversions  
Compression and Tension Force Tests



**LPTSENS**  
Load Cell and Industrial Weighing Systems