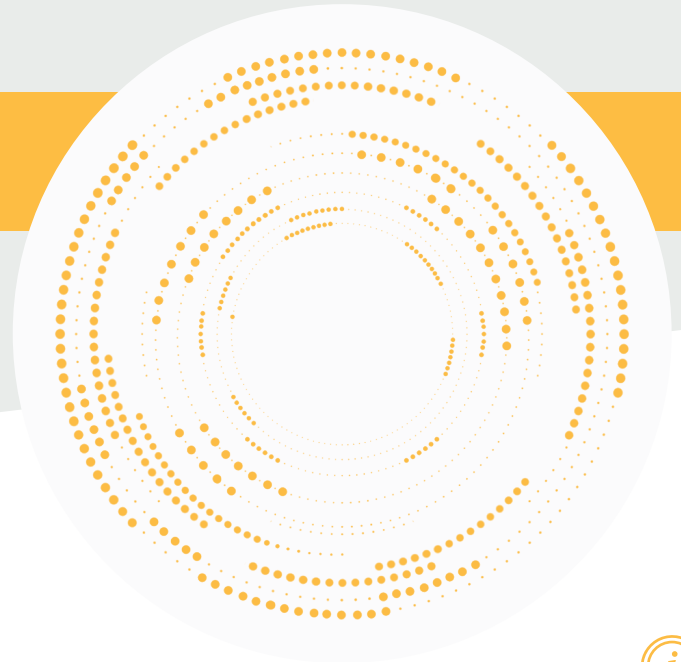


STO

Tension Type Load Cell



Product Description



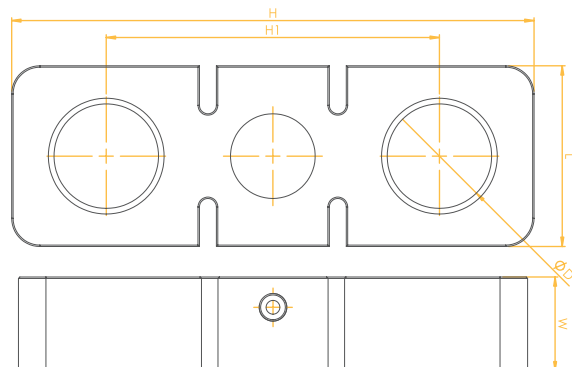
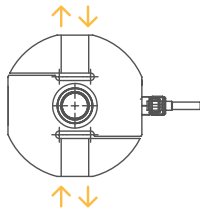
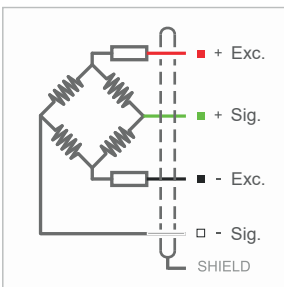
The STO Tension Type Load Cell is designed to meet your high-precision measurement needs with capacity options ranging from 1 ton to 120 tons. Its nickel-plated alloy steel body adapts to harsh industrial conditions, while its IP67 sealing ensures long-lasting and reliable usage. The STO operates on the tension and compression principle.

Technical Specifications



| | | | |
|--------------------------------------|---|-----------------------------------|----------------------|
| Capacity | 1, 2, 5, 10, 20, 30, 50, 75, 100, 120 Ton | Insulation Resistance | ≤ 5000 MΩ (100 VDC) |
| Accuracy Class | C3 | Compensated Operating Temperature | -10 ~ +40 °C |
| Min. Load | 0 kg | Operating Temperature | -30 ~ +70 °C |
| Max. Division Count (nLC) | 3000 | Recommended Excitation Voltage | 10 VDC |
| Min. Measuring Range (Y=Emax / Vmin) | 15000 | Max. Excitation Voltage (Umax) | 15 VDC |
| Total Error | ±0.022 % Full Load | Overload Capacity | 150 % FS |
| Output Gain (FS) | 2.00 ± 0.005mV / V | Breaking Load | 300 % FS |
| Zero Balance | ±1 % Full Load | Protection Class | IP 67 |
| Input Resistance | 380 Ω ± 20 Ω | Material | Alloy Steel |
| Output Resistance | 352 Ω ± 3 Ω | Cable | 4x022mm ² |

Technical Dimensions and Drawings



Application Areas

Strain, Tension, and Force Tests
Mining, Transportation & Logistics
Shipyards, Construction, and Port Logistics

| Capacity | H | H1 | L | W | D | Cable |
|----------|-----|-----|-----|-----|-----|-------|
| 1 Ton | 74 | 49 | 24 | 12 | 15 | 5 m |
| 2 Ton | 110 | 75 | 32 | 15 | 20 | 5 m |
| 5 Ton | 140 | 93 | 42 | 25 | 27 | 5 m |
| 10 Ton | 185 | 118 | 64 | 34 | 37 | 6 m |
| 20 Ton | 252 | 164 | 79 | 50 | 53 | 6 m |
| 30 Ton | 310 | 200 | 94 | 60 | 60 | 6 m |
| 50 Ton | 390 | 255 | 120 | 75 | 73 | 10 m |
| 75 Ton | 486 | 325 | 150 | 90 | 88 | 10 m |
| 100 Ton | 580 | 390 | 180 | 100 | 102 | 10 m |
| 120 Ton | 580 | 390 | 180 | 120 | 102 | 10 m |



LPTSENS
Load Cell and Industrial Weighing Systems