

WTL | Web Tension Load Cell



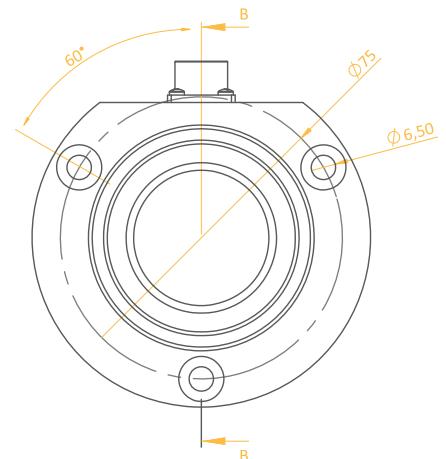
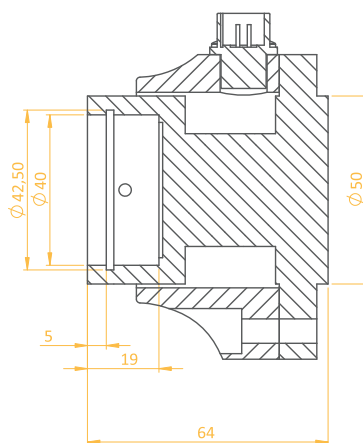
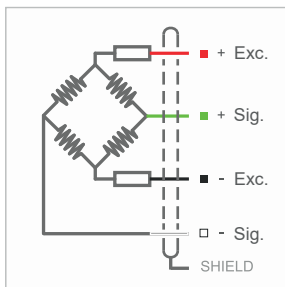
Product Description

The WTL Tension Control Load Cell features a bearing-mounted, disk-type design and is specially developed for tension control applications. Manufactured from durable nickel-plated steel and stainless steel materials, the WTL offers long-lasting performance and high resistance to harsh conditions. The WTL is used with a bearing mounted inside the load cell. Its built-in four-pin connector provides fast and practical connection, simplifying the installation process.

Technical Specifications

Capacity	20, 50, 100, 200 Kg	Insulation Resistance	≤ 5000 MΩ (100 VDC)
Accuracy Class	C3	Compensated Operating Temperature	-10 ~ +40 °C
Min. Load	0 kg	Operating Temperature	-30 ~ +70 °C
Max. Division Count (nLC)	3000	Recommended Excitation Voltage	10 VDC
Min. Measuring Range (Y=Emax / Vmin)	10000	Max. Excitation Voltage (Umax)	15 VDC
Total Error	±0.02 %FS	Overload Capacity	150 % FS
Output Gain (FS)	2.00 ± 0.005mV/V	Breaking Load	300 % FS
Zero Balance	± 1 %FS	Protection Class	IP 66
Input Resistance	400 Ω ± 20 Ω	Material	Alloy / Stainless Steel
Output Resistance	350 Ω ± 5 Ω	Cable	4x0.14mm ² - 3.5 M. with Mike plug

Technical Dimensions and Drawings



Application Areas

Tension Control
Textile Weaving Machines
Printing Press Machines



LPTSENS
Load Cell and Industrial Weighing Systems