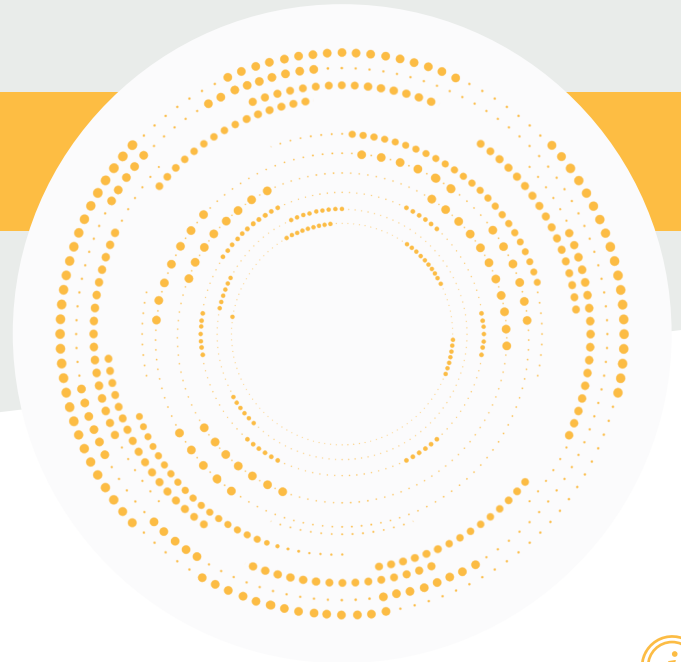


# YL4422 | Feed Machinery Load Cell



## Product Description



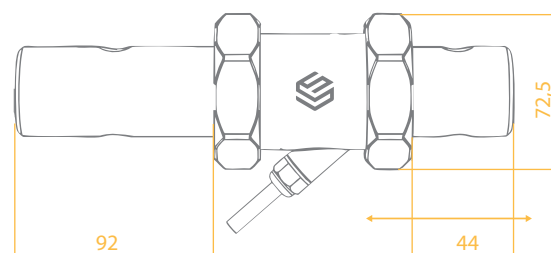
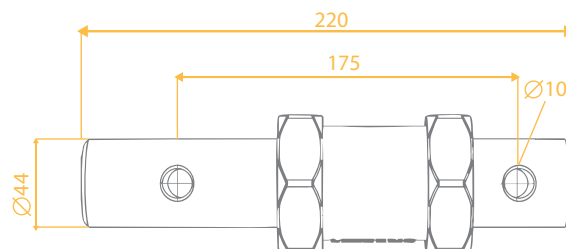
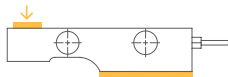
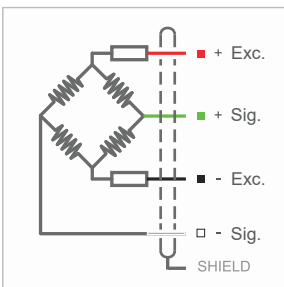
The YL4422 Feed Mixer Machine Load Cell is specially designed for feed mixer machines and mobile weighing systems, offering a high-precision capacity of 3 tons. Its galvanized coating alloy steel body ensures durability and reliability under harsh industrial conditions. The sealed design allows for accurate measurements even during prolonged use. Its housing, made of durable plastic with seals on both sides, protects the measurement area from external factors such as dust and water, complying with the IP67 protection class.

## Technical Specifications



Capacity	3 Ton	Insulation Resistance	≤ 5000 MΩ (100 VDC)
Accuracy Class	D1	Compensated Operating Temperature	-10 ~ +40 °C
Min. Load	0 kg	Operating Temperature	-30 ~ +70 °C
Max. Division Count (nLC)	2000	Recommended Excitation Voltage	10 VDC
Min. Measuring Range (Y=Emax / Vmin)	5000	Max. Excitation Voltage (Umax)	15 VDC
Total Error	±0.05 %FS	Overload Capacity	150 % FS
Output Gain (FS)	0.900 mV/V	Breaking Load	300 % FS
Zero Balance	0.010 mv/V	Protection Class	IP67
Input Resistance	400 Ω ± 20 Ω	Material	Steel
Output Resistance	350 Ω ± 3 Ω	Cable	4x022mm <sup>2</sup> - 2 M

## Technical Dimensions and Drawings



## Application Areas

Feed Mixer Machines  
Mobile Weighing



**LPTSENS**  
Load Cell and Industrial Weighing Systems