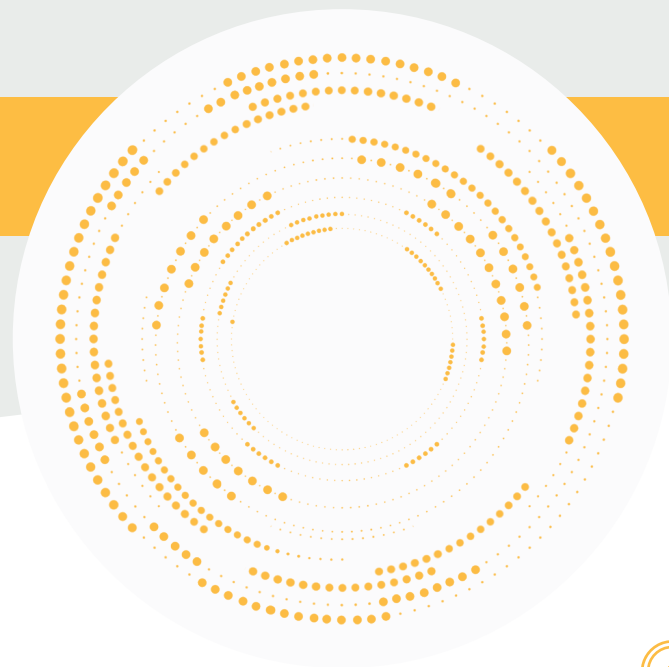


YL6346 | Feed Machinery Load Cell



Product Description



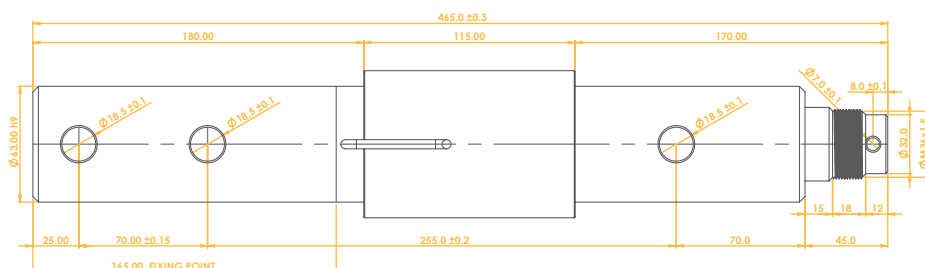
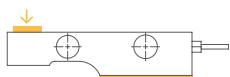
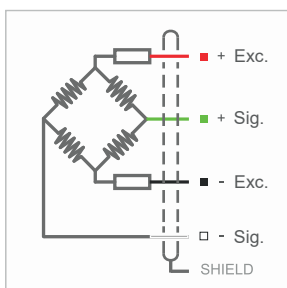
The YL6346 Feed Mixer Machine Load Cell is specially designed for feed mixer machines and mobile weighing systems, offering a high-precision capacity of 5.7 tons. Its galvanized coating alloy steel body ensures durability and reliability under harsh industrial conditions. The sealed design allows for accurate measurements even during prolonged use. Its housing, made of durable plastic with seals on both sides, protects the measurement area from external factors such as dust and water, complying with the IP67 protection class.

Technical Specifications



Capacity	5700 / 8550 Kg	Insulation Resistance	≤ 5000 MΩ (100 VDC)
Accuracy Class	D1	Compensated Operating Temperature	-10 ~ +40 °C
Min. Load	0 kg	Operating Temperature	-30 ~ +70 °C
Max. Division Count (nLC)	1000	Recommended Excitation Voltage	10 VDC
Min. Measuring Range (Y=Emax / Vmin)	4000	Max. Excitation Voltage (Umax)	15 VDC
Total Error	±0.05 %FS	Overload Capacity	150 % FS
Output Gain (FS)	0.80 / 1.20 ± 0.05mV/V	Breaking Load	300 % FS
Zero Balance	± 1 %FS	Protection Class	IP67
Input Resistance	380 Ω ± 20 Ω	Material	Steel
Output Resistance	351 Ω ± 3 Ω	Cable	4x022mm ² - 9 Metre

Technical Dimensions and Drawings



Application Areas

Feed Mixer Machines
Mobile Weighing



LPTSENS
Load Cell and Industrial Weighing Systems